

View this email in your browser

APRIL 2026



GRRMF's Quarterly Volunteer Newsletter



Dear Friend of GRRMF,

Welcome to the very first edition of Pawsitive Connections, our quarterly volunteer eNewsletter created just for you—our incredible GRRMF volunteers.

This newsletter is designed to keep you connected to the heart of our mission by sharing the latest happenings across our organization. From inspiring rescue stories and volunteer highlights to updates on our therapy teams and behind-the-scenes efforts, Pawsitive Connections celebrates the people and dogs who make our ongoing mission possible. Each issue will bring you closer to the impact you help create every day.



Your Volunteer Toolbox

As a volunteer, you have access to a variety of resources to support and grow your journey with GRRMF. Your coordinator is always your first point of contact and there are additional resources available to you on [our website](#) you may not be aware of:

Email Support:

Reach us anytime at volunteer@grrmf.org for questions, guidance, or support.

Explore New Opportunities:

Interested in trying something new or getting more

involved? Check out [available roles here](#).

Volunteer Resources:

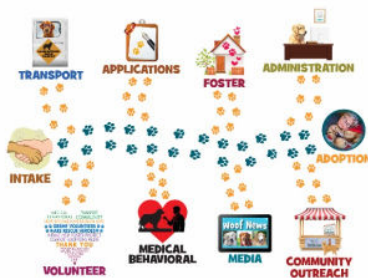
Access the organization chart, business cards, FAQ and more [here](#).



Share Your Story

Every volunteer journey is unique and yours could inspire someone else to get involved or try something new. We'd love to hear from you. Click the link below!

[Share Your Story Form](#)



Discover the GRRMF Village

It truly takes a village to do what we do. From rescue and foster to transport, events, and therapy work, there are so many ways volunteers bring joy and care to our dogs and communities. [Learn more](#) about your critical role and all the ways you can make a difference.

Your compassion and dedication truly make a difference. Together, we are touching hearts and transforming lives. Thank you for being such a vital part of the GRRMF family.

[Explore Volunteer Village](#)

Volunteer



Diana Johnston - Transport Coordinator

Diana Johnston, GRRMF's dedicated Transport Coordinator, is a true Volunteer Service Champion.

Behind every rescue dog's journey to safety, Diana is there—coordinating lifesaving transports, supporting volunteers, and making sure no dog is left behind. Her compassion and commitment turns sadness into second chances every single day. Every dog has a story and for each one, Diana is the bridge between uncertainty and safety.

Diana's compassion doesn't stop with rescue dogs. Outside of GRRMF, she dedicates her time to another mission close to her heart: honoring those who had served. Diana also volunteers as a Flight to Honor volunteer recently helping support an incredible all-women flight from Lakeland, FL, where over 100 women veterans with their guardians, who were also women veterans, traveled to Washington, DC to be recognized for their service.

From saving lives on the ground to honoring heroes in the sky, Diana embodies what it means to serve with heart. Thank you, Diana, for all that you do opening your heart for our dogs and people!

Would you like to nominate a service champion? Submit your recommendation at the link below.

[Nominate a Service Champion](#)



Where the Paws Need You Most

The number of dogs we can save comes down to one critical factor: **foster homes**.

Every open home = lives rescued.

No space means dogs are left waiting. Fostering is temporary, but the impact is life-changing—for them and for you.

Urgent: be their lifeline

Sign up today to become a foster!

[Foster Application](#)



Social Clubs

We love bringing our volunteers together—putting faces to names and sharing meaningful time as a community. We're excited to introduce a new concept: **Social Clubs!** We'd love your feedback on a few ideas we're exploring. [Click here to learn more and share your thoughts.](#)

Memory Wall

Be sure to participate in our 35th anniversary celebration wall [sharing a special photo and memory!](#)

Call for Photos

The 2027 GRRMF Calendar season has started! [Submit photos](#) of your GRRMF rescue and/or Hearts of Gold dog before July 15th to be included.



**GOLDEN RETRIEVER RESCUE
OF MID-FLORIDA**

JOIN OUR NEW SOCIAL CLUBS!

EMAIL: VOLUNTEER@GRRMF.ORG

**Meet & Greet
Luncheons**



Let's Do Lunch!

**Golden Groove
Musicians**



Zoom & Jam Sessions

**Hikes & Strolls
with Our Golden**



Sip. Shine. Socialize



In-Person & Virtual Fun!



Volunteer Resources

GOLDEN RETRIEVER RESCUE OF MID-FLORIDA



Rescue Latest News

GOLDEN RETRIEVER RESCUE OF MID-FLORIDA



Hearts of Gold Latest News

GOLDEN RETRIEVER RESCUE OF MID-FLORIDA



Be a GRRMF

Golden Guardian

Recurring Donations Save More Dogs!



Are you following us on social media?

We post fun content everyday! New arrivals, available dogs, success stories, events and much more! Go to our [Facebook page](#) and click that LIKE button! And [FOLLOW US on Instagram!](#) Don't forget to share us too!

*If this newsletter was forwarded to you and you are not on our list, [sign up here!](#)
We'd love to hear from you! Send us your comments and suggestions
in the contact form at the bottom of our [homepage!](#)*

